



*Memo 2002-1*

---

# Patterns of Medical Providers and Substance Use Providers

---

Gunjeong Lee

Joseph L. Mailman School of Public Health  
Columbia University

---

**Originally submitted May 14, 2002**  
**Second draft, June 18, 2002**  
**Final Submission, July 25, 2002**  
**HRSA Contract #H89 HA 0015-11**

---

**C.H.A.I.N. Report**

## **ACKNOWLEDGMENTS**

A Technical Review Team (TRT) provides oversight for the CHAIN Project. In addition to Peter Messeri, PhD and Angela Aidala, PhD, both of Columbia University's Mailman School of Public Health, TRT members include Mary Ann Chiasson, DrPH, MHRA (chair); JoAnn Hilger, NYCDOH; Jeanne Kalinoski, HIV Planning Council; Julie Lehane, PhD, Westchester County DOH; Jennifer Nelson, MHRA, Richard Peterson, Mayor's Office of AIDS Planning Coordination; and Tom Sentell, PWA Advisory Group.

This research was supported by grant number H89 HA 0015-11 from the US Health Resources and Services Administration (HRSA), HIV/AIDS Bureau with the supported of the HIV Health and Human Services Planning Council, through the New York City Department of Health and the Medical and Health Research Association of New York City, Inc. Its contents are solely the responsibility of the researchers and do not necessarily represent the official views of the U.S. Health Resources and Services Administration, the City of New York, or the Medical and Health Research Association of New York.

## Key Findings

- The percentages of individuals retaining the same primary medical provider has continuously increased from 77 % in round 2 to 87% in round 8. (Table 1)
- The percentages of individuals reporting no primary medical provider has decreased from 9% in round 1 to 2% in round 8. (Table 1)
- Half of the people who changed their primary medical doctor indicated that the doctor's or staff's attitudes or quality of services were the primary reasons for changing their primary medical provider. Approximately one-third of individuals who changed their doctor did so out of necessity – either the individual's doctor had left his or her practice, or the individual had moved in or out of a nursing home or jail.
- In relating the means by which they selected a new provider, a little under one-quarter (23%) of those individuals who switched providers indicated that they did so through another doctor's or professional's reference. A little under one-half (46%) reported that they found a new place on their own, whereas slightly less than one-third (31%) indicated that the new provider was referred by friends or family members. All individuals who switched providers reported that they were satisfied (either very or somewhat) with their new medical providers.(Table 2)
- Nine people(2%) among 388 did not have a medical provider in round 8. Only one among them said that he was healthy and did not need a doctor. Eight individuals without a doctor, all women, reported that they had health problems but were overwhelmed by other problems and needed help in finding a medical provider. All of these women are either black or Latino. Eight out of nine individuals have not had a medical provider for over a year. (Table 3)
- Differences in health outcomes between the group who retained their primary doctors and the group who changed primary doctor were not noticeable. However, as might be expected, individuals without a medical provider were significantly less likely to be on HAART treatment than people who have medical providers. (Table 4)
- The reported prevalence of current substance use and drug treatment utilization have decreased over time. Currently, around 20% of participants are active substance users and 28% of all participants report receiving either professional or self help substance use treatment services. Among current users, the percentages of people who have received substance use treatment has decreased from 47% in the first wave to 28% in the most recent interview.(Table 5 & 6)

- The proportion of individuals retaining the same professional substance use provider in consecutive interviews rounds has declined in the past two years, from a high of 40% at Round 6 to a low of 20% at Round 8. On the other hand, the proportion of people who continue with the same self-help groups remain relatively consistent. (Table 7)
- Health outcomes between the group that retained substance use treatment and the group that discontinued treatment are not significantly different. Health outcomes between the group with the same professional treatment and the group with different professional treatment are not significantly different, either (Table 8).

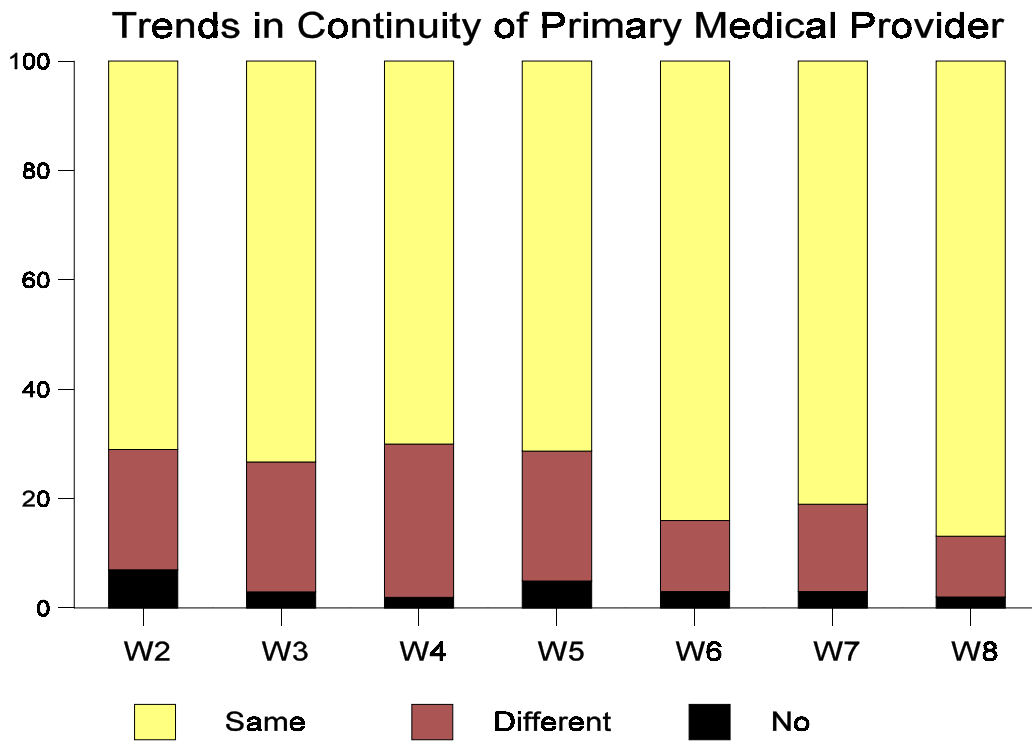
**Part I. PRIMARY MEDICAL PROVIDER**

**Table 1. Trends in Continuity of Primary Medical Provider**

Have Medical Provider	Round 1	Round 2	Round 3	Round 4	Round 5	Round 6	Round 7	Round 8
<b>Total N=</b>	700	568	480	420	651	508	444	388
<b>No Provider</b>	9%	7%	3%	2%	5% (4,7)	3% (2,3)	3% (3,4)	2% <sup>1</sup> (2,3)
<b>Same Provider <sup>2</sup></b>	-	71%	74%	70%	72%	84% (85,83)	81% (84,76)	88% (89,85)
<b>Different Provider</b>	-	22%	24%	28%	24%	13% (13,14)	16% (13,20)	10% (10,11)

<sup>1</sup> From round 5 or 6, in parenthesis, front percentages for original cohort and second percentages for refresher cohort were indicated.

<sup>2</sup> Same medical provider means either having the exact same doctor or having a same doctor but now works in a different clinic/agency.



**Table 2. Reasons for Changing Primary Medical Provider in Wave 8 (N = 39/388)\***

<b>Reasons to change Medical Provider</b>	31% (12)	necessary change (clinic closed, doctors left, lost insurance, moved into or out nursing home or jail, etc. )
	26% (10)	problem with doctors (doctors don't take care of enough, doctor wasn't careful of confidentiality, rude attitude)
	23% (9)	problem with services (staff are rude, waiting time is too long, results are delayed)
	13% (5)	distance (too far, find closer one)
	7% (3)	other( follow the partner, don't know)
<b>Methods to get a new one</b>	46% (18)	selected on their own
	31% (12)	referred by friends or family members
	23% (9)	referred by another doctor or case manager
<b>Satisfaction with new one</b>	79% (31)	very satisfied
	21% (8)	somewhat satisfied

\* 19 of them are women and 20 are men. 4 of them are white, 24 are black and 11 are Latinos.

**Table 3. Reasons for Not Having Primary Medical Providers in Wave 8 (N = 9/388)\***

<b>Reasons why no medical provider</b>	7	have health problem but do not have doctors (mentally ill, lost weight, breathing problems, problem with housing or children, etc.) (All females)
	1	healthy, no need medical provider (male)
	1	looking for a new one (female)
<b>Length of no medical provider</b>	8	more than a year
	1	less than a year

\* 8 of them are women and 1 is man. 6 of them are black and 3 are Latinos.

**Table 4. Effects of Continuity of Medical Provider on Health Outcome Wave 8 (N =388)**

<b>Health Outcome</b>	<b>N</b>	<b>Appropriate Medical Care</b>	<b>Opportunistic Infection</b>	<b>HAART</b>	<b>PCS (Mean)</b>	<b>MCS (Mean)</b>
<b>No Provider</b>	9	0%	0%*	11%	41	45
<b>Same Provider</b>	340	71%	36%	52%	43	46
<b>Different Provider</b>	39	74%	33%	49%	50	44

\* This result may be based on the fact that people with no medical provider couldn't provide the exact information about their health status.

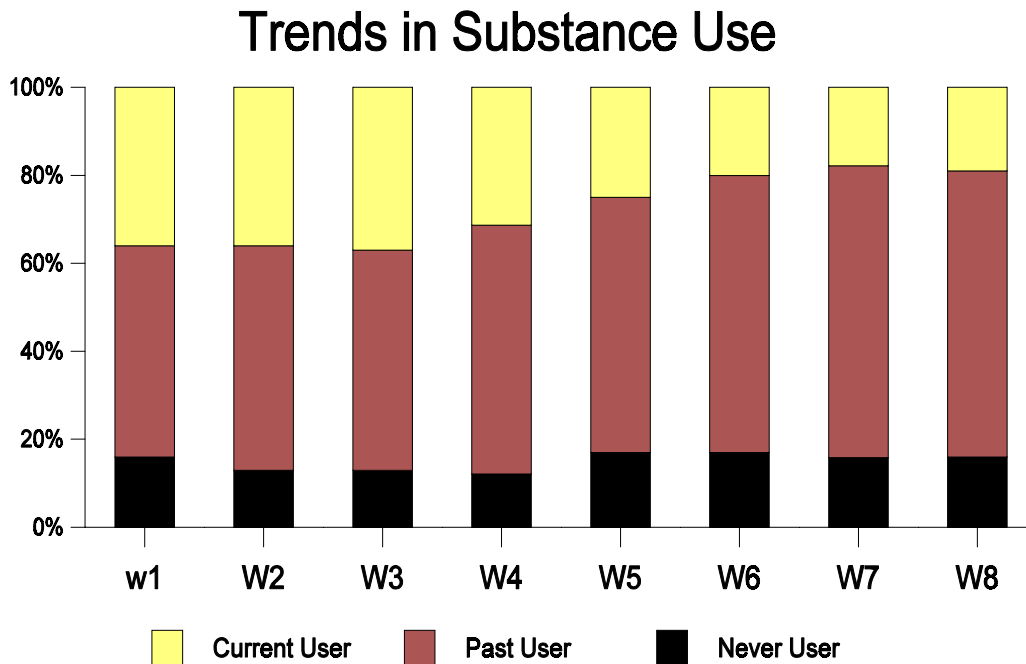
**Part II. SUBSTANCE USE PROVIDER**

**Table 5. Trends in Substance Use**

	Round 1	Round 2	Round 3	Round 4	Round 5**	Round 6	Round 7	Round 8
<b>Total N =</b>	<b>700</b>	<b>568</b>	<b>480</b>	<b>420</b>	<b>651</b>	<b>508</b>	<b>444</b>	<b>388</b>
<b>Never Substance User</b>	16%	13%	13%	12%	17% (12,25)	17% (12,25)	16% (12,21)	16% (11,23)
<b>Past Substance User</b>	48%	51%	50%	56%	58% (59,57)	63% (68,56)	67% (68,64)	63% (69,54)
<b>Current Substance User*</b>	36%	36%	37%	31%	25% (29,18)	20% (20,19)	18% (19,15)	21% (20,23)

\* Current Substance Use means that respondents report using cocaine, crack or heroin more than five times in past six months, or have had a problem with alcohol during the past six months.

\*\* From round 5, in parenthesis, first percentage refers to original cohort and second percentage indicates refresher cohort.



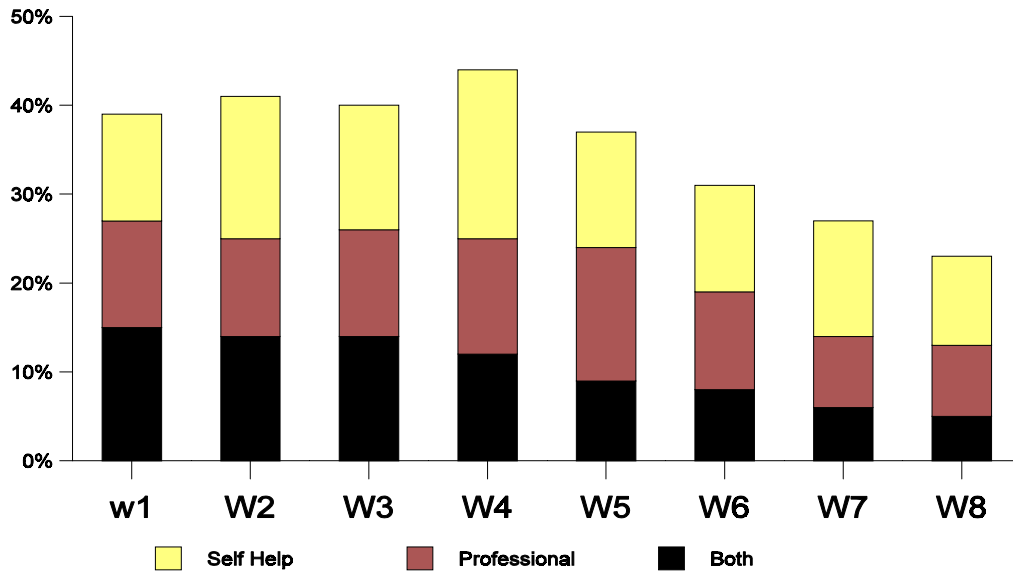
**Table 6. Trends in Substance Use Treatment Services**

	Round 1	Round 2	Round 3	Round 4	Round 5	Round 6	Round 7	Round 8
<b>Total N =</b>	<b>700</b>	<b>568</b>	<b>480</b>	<b>420</b>	<b>651</b>	<b>508</b>	<b>444</b>	<b>388</b>
<b>Both Treatment and Self Help</b>	15%	14%	14%	12%	9%	8%	6%	5%
<b>Professional Treatment Only*</b>	12%	11%	12%	13%	15%	11%	8%	8%
<b>Self Help Group Only **</b>	12%	16%	14%	19%	13%	12%	13%	10%
<b>No Service</b>	61%	59%	60%	56%	63%	69%	73%	78%
<b>Current User N=</b>	<b>251</b>	<b>203</b>	<b>178</b>	<b>132</b>	<b>160</b>	<b>100</b>	<b>79</b>	<b>81</b>
<b>Any Treatment</b>	47%	50%	49%	55%	45%	40%	29%	28%
<b>No Treatment</b>	53%	50%	51%	45%	55%	60%	71%	72%

\* Professional treatment includes in-patient treatment, out-patient treatment, detoxification program, therapeutic community, halfway house, residential treatment, methadone maintenance, employee assistance program, individual counselor, psychologist or psychiatrist, and other special treatment.

\*\* Self help group program includes Alcoholics Anonymous, Narcotics Anonymous and other self-help group programs.

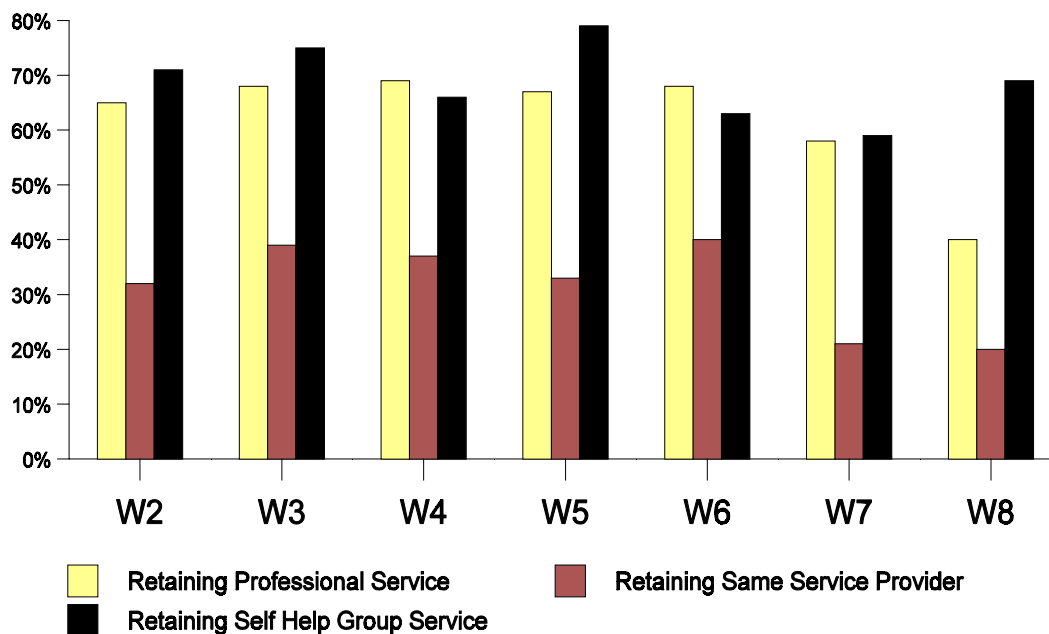
### Trends in Substance Use Treatment



**Table 7. Trends in Retention of Substance Use Treatment Providers**

	Round 2	Round 3	Round 4	Round 5	Round 6	Round 7	Round 8
<b>Total N =</b>	568	480	420	651 (383)	508	444	388
<b>N who use professional service</b>	142	123	104	88	93	60	48
<b>Retaining Professional Service</b>	65%	68%	69%	67%	68%	58%	42%
<b>Retaining Same Service Provider</b>	32%	39%	37%	33%	40%	21%	20%
<b>N who use self-help group service</b>	167	134	129	92	101	86	56
<b>Retaining Self-Help Group Service</b>	71%	75%	66%	79%	63%	59%	68%

**Trends in Continuity of Substance Use Service**



**Table 8. Effects of Continuity of Substance Use Provider on Health Outcome Wave 8**

<b>Health Outcome</b>	<b>N (388)</b>	<b>Appropriate Medical Care</b>	<b>Opportunistic Infection</b>	<b>HAART</b>	<b>PCS (Mean)</b>	<b>MCS (Mean)</b>
<b>No Professional Treatment and never drug user</b>	242	75%	25%	60%	45	49
<b>No Professional Treatment and past/ current drug user</b>	60	70%	35%	49%	43	46
<b>Continuing Substance Use Treatment</b>	61	66%	39%	53%	43	47
<b>Discontinuing Substance Use Treatment</b>	25	64%	44%	44%	40	41